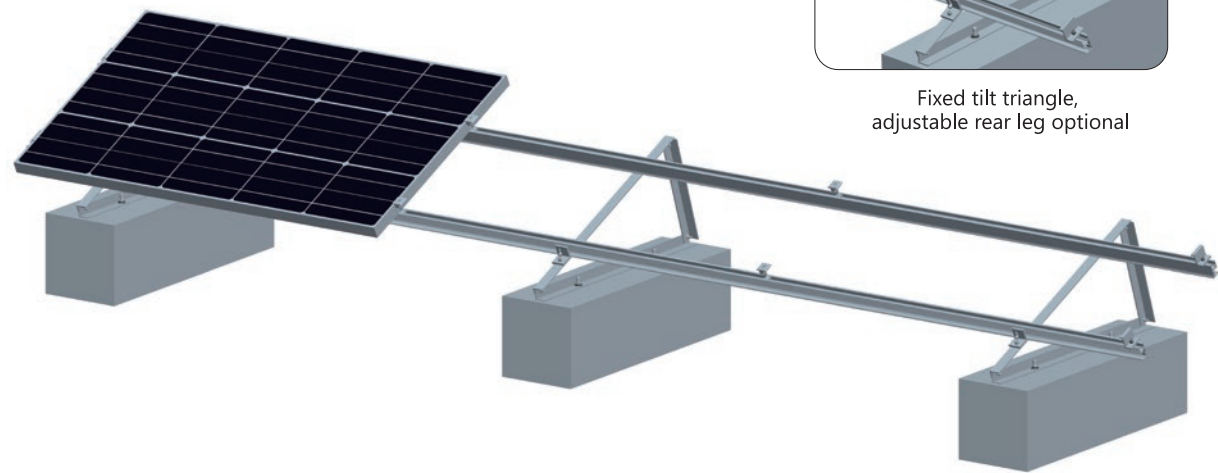


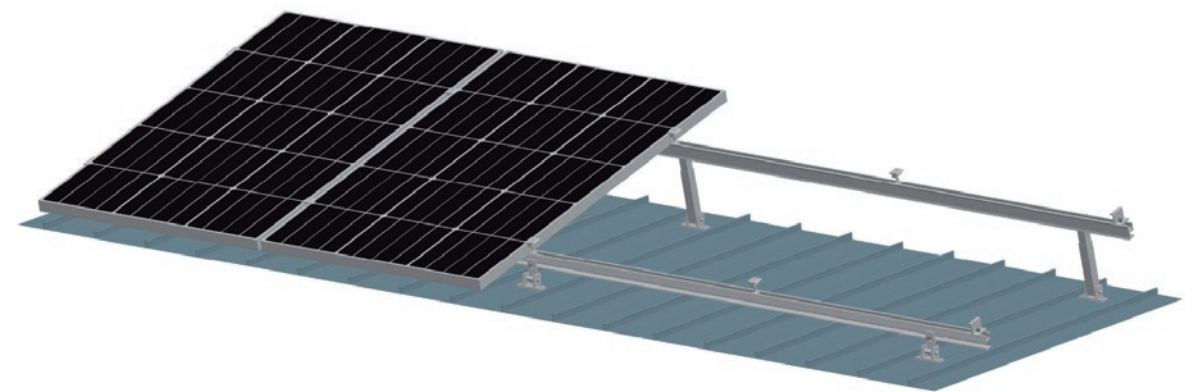
Fixed tilt triangle,
adjustable rear leg optional



Elevated flat roof mounting rack

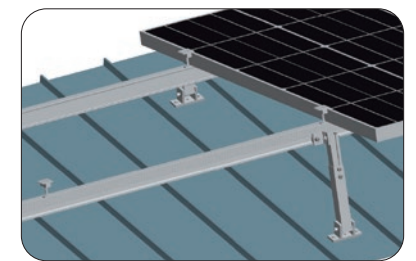
Adaptable, economical mounting on almost all flat roof coverings

Antaisolar elevated flat roof mounting system will easily fit different flat roof or open terrain applications, due to its variable tilt angle and footing options for both ballasted solution and roof penetration. Elevation can be used as fixed tilt or adjustable tilt, allows project-specific adjustments and optimize solar power output. The innovative design and high pre-assembly eliminate the need for on-site cutting, welding and enable quick and easy field PV module installation.



Features

Installation site	Flat roofs (trapezoidal, corrugated sheet metal, asbestos, standing seam, concrete or gravel), pitched roof, open terrain
Roof slope	Up to 45°
Building height	Up to 20m
Wind speed	Up to 88m/s (316.8kmh/196.9mph)
Standard	AS/NZ1170.2:2011, JIS C 8955:2011, other international standards
Tilt angle	Fixed, 10-15°, 15-30°, 30-60°
Supporting profile	Minimum two rails supporting each panel
Distance between footings	Depending on load condition, refer to manual
PV module	Framed
Module orientation	Landscape, portrait
Size of module array	Any layout up to site condition
Material	Anodized aluminum 6005 T5, stainless steel 304
Color	Natural, powder coated
Module widths	Maximum 1.0m
Module lengths	Maximum 2.0m
Warranty	10 years limited warranty, refer to warranty doc



Adjustable tilt legs

●Roof structure to be checked as suitable before installation



Flat roof



Framed module



Unframed module



Orientation landscape



Orientation portrait